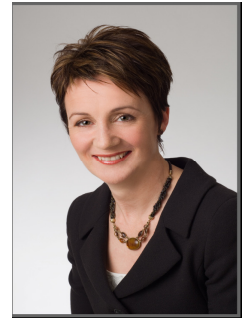


Biography

Beverley Thompson - Human Resources & Training Consultant

Beverley is a business focused HR & Training professional who has demonstrated her ability to operate highly effectively at strategic and senior operational levels. Her consultancy work has included delivery of a wide range of pragmatic and realistic Human Resource and Training solutions that have helped companies to develop the performance of people in their roles and enable them to achieve their business goals. Previous interim & consultancy experience includes:



- Interim HR Director – Senior level position in a Corporate Real Estate company responsible for leading HR & training activity and European transition activity
- Interim HR Specialist in a Facilities Management organisation - Transferring employees in and out of the organisation in line with commercial contract wins. Employees transferred across a variety of European countries
- Interim lead on Learning & Development in a Facilities Management organization
- HR Strategy & policy development
- Organisational restructuring and change programmes
- Senior Management team development for a number of organisations – assisting with development of organisational vision & strategy and development of individual team members
- Leading change programmes involving TUPE & Redundancy consultation
- Individual coaching including use of psychometric instruments & 360 degree feedback
- Design & Delivery of training programmes – including Leadership & Management development, Customer Service Excellence (endorsed by the Institute of Customer Service) & HR programmes
- Assessment Centres, Competency Framework Development
- Development and Implementation of performance management & succession planning programmes
- Management of company annual pay review
- Providing strategic & Operational HR advice to organisations